

Issue with the Spectra

https://docs.google.com/presentation/d/1oS1jyBtleAXIFqPzEUg_Km6fsCf9KcFyMNGploIMaW4/edit?usp=sharing

- **side lobes in the higher heights**
- **distorted above 2.12 km**

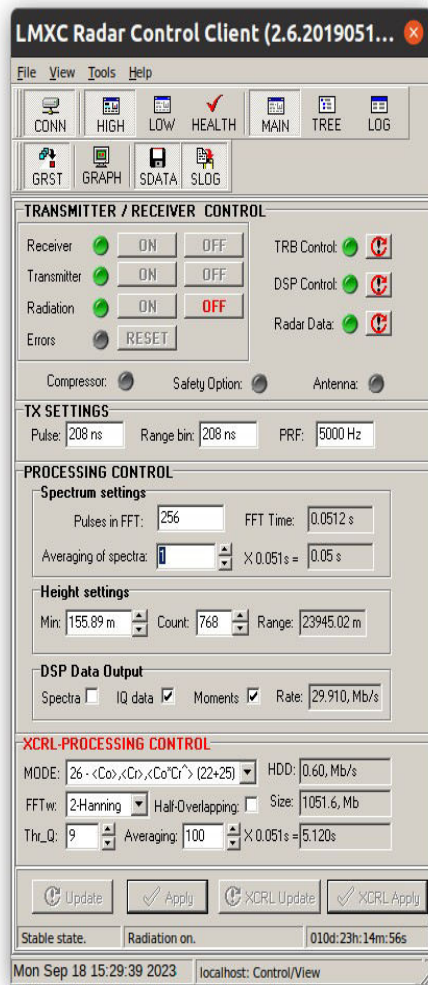
Due to this, the spectra and hence moments files will be having some issue after the replacement of the new antenna i.e, 23.08.2023 to 18.09.2023

To resolve Spectra side lobes

Below linc settings show how to resolve the spectra issue

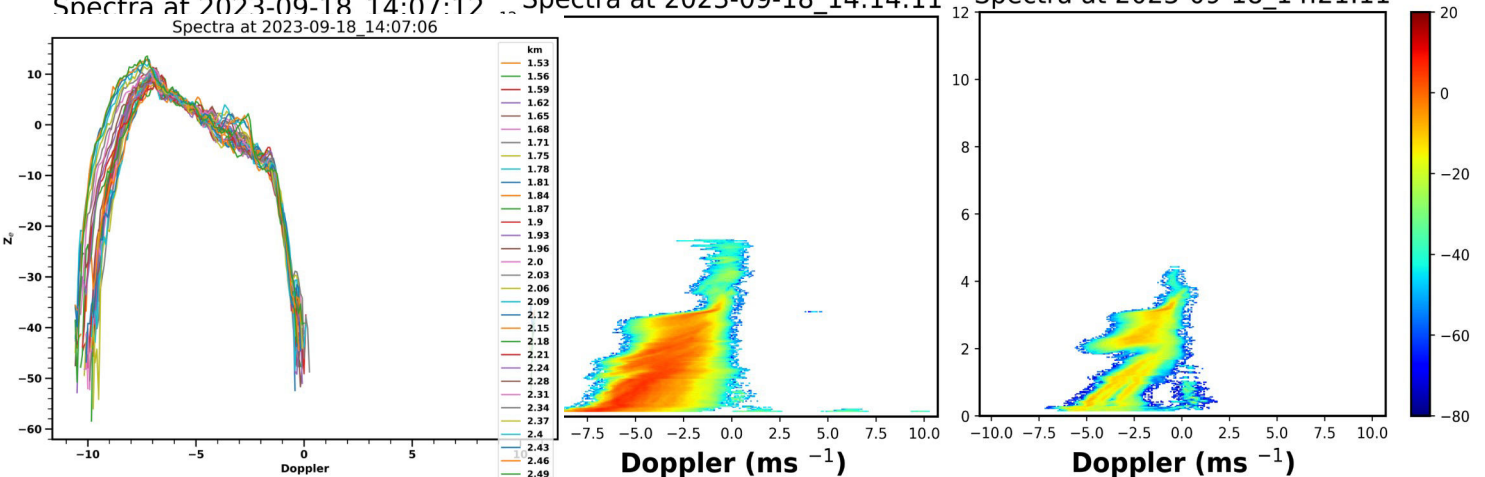
- **switching off the Half-overlapping**

- averaging time reduced to 5 seconds (earlier was ~10 seconds)



Spectral density after the above settings are changed

Spectra at 2023-09-18 14:07:12 .. Spectra at 2023-09-18_14:14:11 Spectra at 2023-09-18_14:21:11
 Spectra at 2023-09-18_14:07:06



Figures focusing on the height (~ 2 km) above which the issue was seen previously

